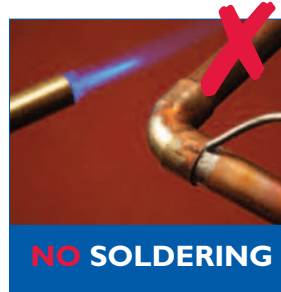




Make the Quality Connection with our **NEW** Qual-PEX Crimp System

- Sleek
- Affordable
- Fast
- Efficient



Comprehensive range of fittings available in 1/2" & 3/4" to suit every job.

For more information go to www.pipelife.ie
 Pipelife Ireland Ltd, White's Cross, Cork T23T992.
 Phone: 021-4884700 Fax: 021-4884701 Email: ireland@pipelife.com

QUAL-PEX CRIMP FITTING

Pipelife have developed an extensive range of quality crimp fittings which have complete compatibility with Qual-PEX pipe. The premium grade annealed aluminium protective metal sleeve is precisely attached to each fitting during production and is designed to provide a unique metal reinforced leak free joint.

The polymer fittings are made from a high performance thermoplastic. The polymer fittings can withstand high temperatures and are corrosion resistant. Users of Qual-PEX Crimp fittings will find installation much quicker, easier and more economical than other available systems.

The maximum operating temperature for the Qual-PEX Crimp System is 82°C. Please ensure that the system is suitably calibrated not to exceed these conditions.

The Benefits of the Qual-PEX Crimp System. S.A.F.E. : Sleek, Affordable, Fast, Efficient.

- ✓ No Expensive tooling – theft of other crimp tools a major problem, no insurance.
- ✓ No confusion over jaw profiles and wall diameter etc.
- ✓ No problems associated with mixing and matching systems.
- ✓ No difficulty pulling through joists.
- ✓ No issue fitting in studwork: Much smaller and neater.
- ✓ No risk of nut loosening behind stud wall
Compression elbow v Qual-PEX Crimp System.
- ✓ No working with heavy press machines on site all day.
- ✓ No battery charging required
- ✓ No water/metal contact.
Completely corrosion resistant.
- ✓ No joint preparation required – FAST.
- ✓ No fitting required in base as per conduit shoe v compression elbow on copper.
- ✓ Availability of manufacture's rep's.
- ✓ Wide network of Qual-PEX stockists – full range of multilayer not stocked in many merchants.
- ✓ Speed.
- ✓ Approval from engineers.
- ✓ Tooling up for the Qual-PEX Crimp System is inexpensive. This is a major benefit.
As your company expands, no forking out thousands of Euro on tooling up.
- ✓ Simple, controlled and accurate joint – every time.
- ✓ 50 Year Guarantee.





NEW
extended range
of fittings
coming on-line
in 2018!

STRAIGHT CONNECTOR		
CODE	SIZE	BAG QTY
3095210060	1/2"	25
3095210065	3/4"	25

ELBOW CONNECTOR		
CODE	SIZE	BAG QTY
3095210040	1/2"	25
3095210045	3/4"	25



TEE CONNECTOR		
CODE	SIZE	BAG QTY
3095210055	1/2"	25
3095210075	3/4"	25

REDUCING TEE		
CODE	SIZE	BAG QTY
3095210070	3/4" x 3/4" x 1/2"	25
3095210090	3/4" x 1/2" x 1/2"	25
3095210100	3/4" x 1/2" x 3/4"	25

SPIGOT REDUCER		
CODE	SIZE	BAG QTY
3095210080	3/4" X 1/2"	25



STOP END		
CODE	SIZE	BAG QTY
3095210050	1/2"	25
3095210085	3/4"	25

STRAIGHT TAP CONNECTOR		
CODE	SIZE	BAG QTY
3095210105	1/2"	25
3095210110	3/4"	25

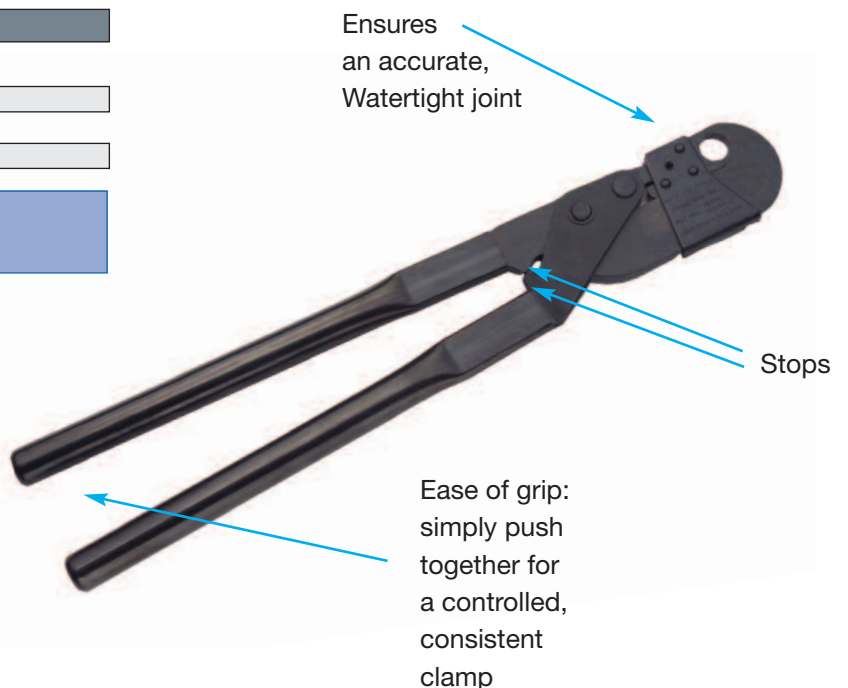
MALE STRAIGHT CONNECTOR		
CODE	SIZE	BAG QTY
3095210115	1/2"	25

Qual-Pex Clamp Tool

The patented Pipelife clamp tool is an integral feature of the Qual-Pex Crimp System and ensures a simple, accurate, watertight joint every time. As the tool clamps onto the aluminium sleeve, it 'work hardens' the section within the jaws of the tool, making a watertight joint and leaving a section of the aluminium sleeve on both sides still in the annealed state. This ensures that there is no stress on the pipe or the crimp fitting.

CRIMP TOOL			
CODE	SIZE	BAG QTY	
3095210120	1/2"	1	
3095210125	3/4"	1	

Only compatible with Qual-PEX Crimp System manufactured by Pipelife Ireland.

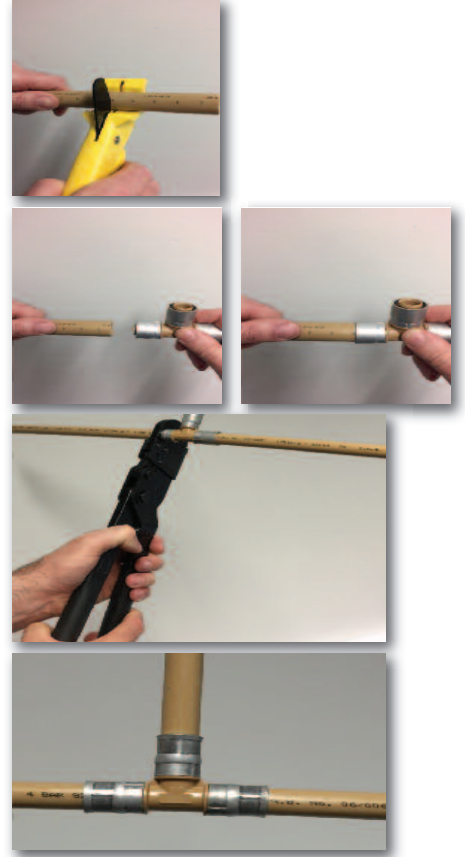




A depth marker can be found every 15mm on Qual-PEX pipe.

1. Cut pipe squarely at the Qual-PEX Crimp depth marker with Qual-PEX pipe cutter.
2. Insert the pipe into the fitting until the aluminium sleeve is in line with the next depth marker. **1/4 twist pipe onto fitting to ensure a sure fit. Ensure you push the pipe all the way (15mm) into the shoulder of the fitting.**
3. Clamp-Hold-Release Clamp approximately 2mm in from the end of the fitting, close the tool handles completely to the stops provided, and hold firmly for around 2 seconds, then release.
4. The process of installing the system is clean and quick, leaving a watertight mechanical joint.

* Depth markers should only be used for Qual-PEX Crimp fitting and not compression or pushfit.



Other Products in the Qual-PEX Crimp System Range



Qual-PEX



Qual-PEX ECO



Qual-PEX Pipe-in-Pipe



Testimonials

“Tool fits into tight spaces. Crimp fitting very neat looking compared to compression. Crimp Tee v compression Tee time trial, 8 crimp Tees installed compared to 3 compression Tees. Delighted with the Qual-PEX Crimp system. Will be using it in the future.”

Mathew Keogh, Plumber, Dublin.

“Very happy with how simple this system is. No inserts needed, huge cost saving on many levels, faster, cheaper than MLCP crimp, much lighter for transportation, will be widely available. No confusion on what profile, what jaws, availability of the fittings. Love the sleek finish. Only tools needed is a cutters and a clamp tool. This is a game changer”

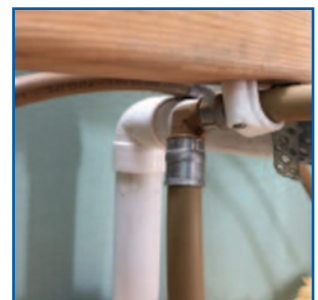
Trevor Hill, Hill Heating & Plumbing, Cork.

It took one senior plumber and apprentice 2 and half days to first fix one house with multilayer pipe. With the Pipelife Qual-PEX Crimp System we first fixed one house in a little over one day. We are delighted with the speed and ease of the fittings. We will continue to use our system for this site with Qual-PEX. Also the 1/2" & 3/4" nail on clips fit perfectly around the fittings.

Thomas Donegan, Ballyshane, Rathangan, Co. Kildare.



Example of an installation in Monstererevin, Co Kildare. Saving on labour time is 50% over multilayer.



Example of an installation in Kinsale, Co. Cork. Saving on labour time is 60% over compression.