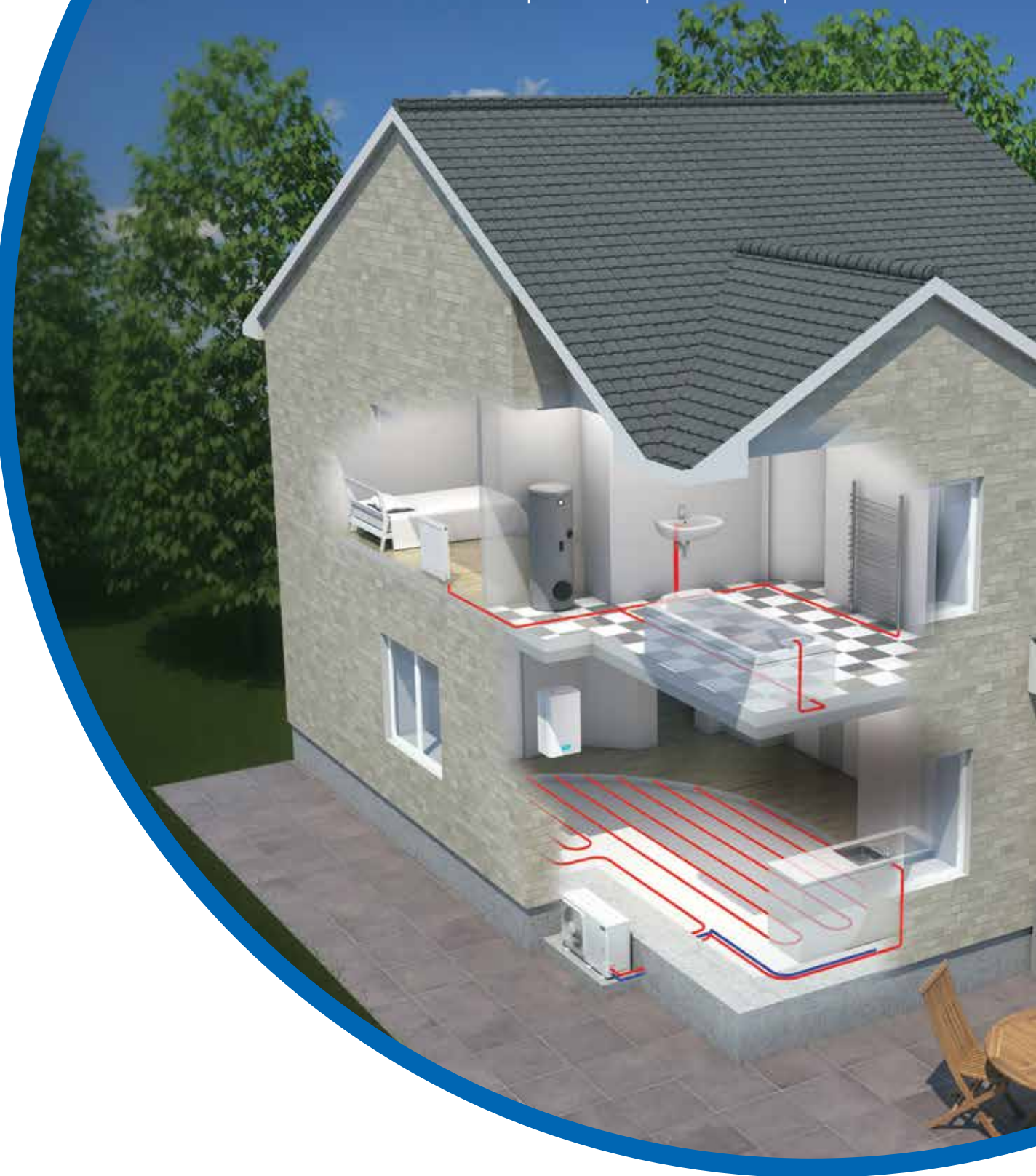


Pipelife Renewable Brochure

CONSULTING | SALES | DESIGN | SUPPORT



www.pipelife.ie
[e:ireland@pipelife.com](mailto:ireland@pipelife.com)
t: +353 21 4884700



Company Profile

Pipelife Ireland Ltd. is the leading producer of plastic pipe systems and the largest supplier of custom-designed underfloor heating solutions in Ireland.

Drawing on our 50 years of manufacturing experience from our production plant in Cork, Pipelife has been in the forefront in developing innovative products for many years, including our Qual-PEX Eco Pipe and Pipelife Eco Underfloor Heating, engineered with energy conservation and waste water renewal in mind.

Your home is your most important investment decision and heating your home represents the largest annual running cost you will have in ensuring your family's comfort over many years. Choosing the right heating system and more importantly, the right supplier is a decision that will impact you for decades to come.

PIPELIFE IS ONE OF THE WORLD'S LEADING SUPPLIERS OF PLASTIC PIPE SYSTEMS, CURRENTLY PRESENT IN 26 COUNTRIES. PIPELIFE MANUFACTURES AND MARKETS A WIDE RANGE OF QUALITY PIPE SYSTEMS, WITH ANNUAL SALES OF APPROXIMATELY 1BN.

By choosing our Home Heating Solution and putting your trust in the capable hands of our team, you consciously make the following decisions:

- ✓ To deal directly with a reputable Irish manufacturer, and not with a middle-man
- ✓ To receive a comprehensive before and after-sales support from our team
- ✓ To use only top-quality pipes, made in Ireland, and not cheap imports
- ✓ With the financial strength of being part of a leading multi-national group you can be sure that your Pipelife system will be fully supported. As an added re-assurance for you, Pipelife accepts full responsibility for the design of your system along with the specification, and supply of materials. We also carry full design indemnity and product liability insurance to cover all designs thus giving you peace of mind that when you choose Pipelife you choose quality products, reliable systems and an after sales commitment that other operators cannot compete with.
- ✓ And last but not least, to give yourself and your family a peace of mind, knowing that if the worst should happen, and the pipe buried underground gets damaged, your system is guaranteed for 50 years by a company who will surely be there in 50-years time.



Our Products – Your Benefits



UNDERFLOOR HEATING

Tried & Tested Technology -

Pipelife is Ireland's leading manufacturer of underfloor heating systems comprising of our new Qual-Pex Plus+ 'Easy-Lay' Heating & Plumbing Pipe. Get the Plus+ Advantage.



HEAT PUMPS

Full Design Service -

Our in-house engineers can provide detailed plans for the application of renewable technologies specific to an individual projects from domestic to commercial. These include full heat loss calculations, energy saving estimates, plus a complete product and accessory specification.



ACCESSORIES

Customer Service -

When you choose Pipelife, you have the support of our experienced customer service team, as well as backup provided by our specialist service engineers. Our in-house designers work with homeowners, contractors, architects & consulting engineers across the country in projects ranging from residential homes, hospitals and nursing homes to warehouses and car showrooms.

Wide Distribution Network

Our full product range can be found in all leading merchants throughout Ireland. You can obtain a list of merchants within your area through our website www.pipelife.ie



QUAL-PEX PLUS+
'EASY-LAY' PIPES

Your One Stop Shop

At Pipelife we believe in providing our customers with a one-stop-shop for complete package solutions; from market-leading products, free initial advice, through to bespoke design, installation, final commissioning and technical support, allowing you to purchase with confidence.

Our Commitment

Pipelife is Ireland's leading and trusted supplier to the plumbing industry for the last 50 years and with the financial strength of being part of a leading multi-national group you can be sure that your Pipelife system will be fully supported. As an added re-assurance for our customers, Pipelife accepts full responsibility for the design of your system along with the specification, and supply of materials. We also carry full design indemnity and product liability insurance to cover all designs thus giving our customers peace of mind that when they choose Pipelife they choose quality products, reliable systems and an after sales commitment that other operators cannot compete with.

For more information and to talk to our team call us on 021 488 4700 or e-mail us at ireland@pipelife.com

Meet the Team – Pipelife Eco Renewables Department

Meet the team that's involved in bringing a design or concept to reality



Padjoe Barry
National Sales Manager
E: padjoe.barry@pipelife.com
M: +353 (0) 86 8195041
P: +353 21 4884700 EXT 185



Michael Geary
Technical Manager
E: michael.geary@pipelife.com
M: +353 (0) 86 8527622
P: +353 21 4884700 EXT 145



Glenn Kenneally B.Eng M.I.E.I
(Area – Cork, Kerry)
Technical Sales Representative
E: glenn.kenneally@pipelife.com
M: +353 (0) 86 0483446



Joe Redmond
(Area – South Dublin, Kildare, Laois, Offaly, Wicklow)
Technical Sales Representative
E: joe.redmond@pipelife.com
M: +353 (0) 87 355 1377



Philip Duffy
(Area – North Dublin, Cavan, Louth, Meath, Monaghan)
Technical Sales Representative
E: philip.duffy@pipelife.com
M: +353 (0) 87 788 3040



Martin Sweeney
(Area – Clare, Donegal, Galway, Mayo, Roscommon, Sligo, Leitrim, Limerick, Longford, North Tipperary, Westmeath)
Technical Sales Representative
E: martin.sweeney@pipelife.com
M: +353 (0) 86 2569703



Kevin Corcoran
(Area – Carlow, Kilkenny, Waterford, Wexford, South Tipperary)
Technical Sales Representative
E: kevin.corcoran@pipelife.com
M: +353 (0) 87 392735



Jim Delaney
(Area – Northern Ireland)
Technical Sales Representative
E: jim.delaney@pipelife.com
M: +44 779381 0517

In-House Team



Peter O'Sullivan
Gas Services Engineer
E: peter.osullivan@pipelife.com
M: +353 (0) 87 3621813



Neil Nagle B.Eng M.I.E.I
Design Engineer
E: neil.nagle@pipelife.com
P: +353 21 4884700 EXT 144



Jerry O'Connor
Design Engineer
E: jerry.oconnor@pipelife.com
P: +353 21 4884700 EXT 146



Barry Kelleher
Design Engineer
E: barry.kelleher@pipelife.com
P: +353 21 4884700 EXT 142

One of the main considerations when designing a home will be how to heat it.

The ideal stage to consider your Home Heating requirements is during the design process and is one of the most critical items that you will put into your house. Most of the system will be buried in your floor foundations for the lifetime of your property. So it is critical that the components used are top quality and fully backed by reputable manufacturers.

Why put your trust in Pipelife Eco Home Heating Solutions?

In 1996, the original Underfloor Heating department was set-up. Fast forward to 2016 and our new Renewables Division was established incorporating all the best the Pipelife Group has to offer. We cover every aspect of your home heating requirements and deliver fully designed, energy efficient systems.

We have a proven track record almost 50 years service and commitment to the industry backed by exceptionally trained staff and a dedicated technical backup service. Combining all of these aspects results in an outstanding system, delivered in a professional and highly skilled manner second to none!

Manufactured In Ireland

Our Qual-Pex Plus+ Easy-Lay Pipe is 100% Irish made and is manufactured to the most stringent standards allowing you to install with confidence. Plus with every purchase of Qual-Pex Plus+ Easy-Lay Pipe you're supporting Irish Jobs!

Quality Choice

When you choose Pipelife Eco, You choose a quality product manufactured by a trusted leader of Plumbing & Heating Pipe in Ireland with almost 50 years' experience.

Proven & Guaranteed

With our market leading 50 Year Guarantee.

DID YOU KNOW?

PIPELIFE ACCEPTS FULL RESPONSIBILITY FOR THE DESIGN OF THE SYSTEM AND THE SPECIFICATION AND SUPPLY OF MATERIALS. AS AN ADDED RE-ASSURANCE, FOR THE CUSTOMER, PIPELIFE CARRIES PROFESSIONAL INDEMNITY INSURANCE TO COVER ALL DESIGNS.

Looking For More Information?

Why not drop us a line at Ireland@pipelife.com, visit our website www.pipelife.ie or just pick up the phone and call us on 021 4884700.

Qual-Pex Plus+ 'Easy-Lay' Multilayer Pipe



- Qual-PEX Plus+ "Easy-Lay" Multilayer Pipe is the next generation plumbing & heating pipe, for hot and cold water distribution services, as well as for central heating and underfloor heating systems.
- Qual-PEX Plus+ "Easy-Lay" Multilayer Pipe is extremely flexible, with exceptional lay-flat capability, enabling faster, easier and more cost-effective installations. This pipe has been designed to provide the plumbing professional with a 'universal alternative' to the various other piping products on the market, and it will prove to be a more effective plumbing solution, for many applications where aluminium pipe might otherwise be considered.
- Qual-PEX Plus+ 'Easy-Lay' is approved for use under the following service conditions:
 - 12 Bar at 20°C
 - 4 Bar at 82°C
 - 3 Bar at 92°C
- Qual-PEX Plus+ "Easy-Lay" Multilayer Pipe is designed to complement with full compatibility Suitably approved 'Press Fittings'
- Qual-PEX Plus+ "Easy-Lay" Multilayer Pipe is available in the following sizes in both lengths & coils - 16mm, 20mm, 26mm & 32mm
- Qual-PEX Plus+ "Easy-Lay" Multilayer can also be purchased pre-insulated - Qual-PEX Plus+ 'Easy-Lay' Eco
- Is 100% Irish Made and is manufactured to the most stringent standards allowing you to install with confidence
- 50 Year Guarantee



GET THE **PLUS+ ADVANTAGE** with our NEW

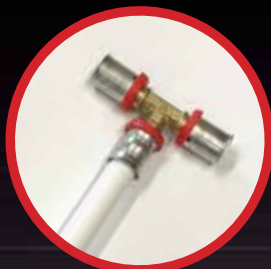
Qual-Pex^{PLUS+} *EASY-LAY* Multilayer Pipe

Our new Qual-Pex Plus+ 'Easy-Lay' Multilayer Pipe is a universal pipe that can be used with any *suitably approved/certified Press fitting.

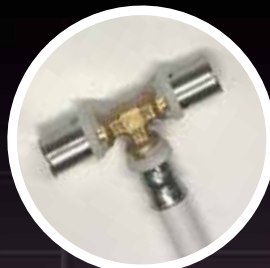
Just another Plus+ Advantage!!



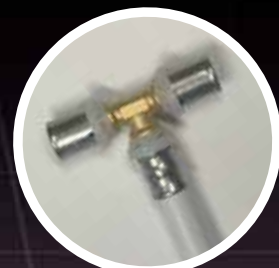
Presstite



Tiemme



Comisa



Instantor Press



PF press



Emmetti



Ape



FLAT



FAST



FLEXIBLE



Guaranteed Irish
All together better

* (i.e meeting Irish Agreement Board requirements and/or relevant European Standards, i.e. fittings manufactured to EN ISO 21003)

This guarantee is subject to our standard terms and conditions



Qual-PEX Plus+ ECO Duo consists of two pre-insulated, Qual-PEX Plus+ Easy-Lay Pipes encapsulated in 125mm of high performance insulation protected within a corrugated PE-HD twin wall outer casing for maximum protection.

Qual-Pex Plus+ 'Easy-Lay' Eco DUO

With our new Qual-Pex Plus+ 'Easy-Lay' Eco Duo piping system, Pipelife has truly advanced the safe, reliable and energy efficient distribution of water for heating, cooling and hot/cold water supply services.

Qual-Pex Plus+ 'Easy-Lay' Eco Duo can be used in a range of applications from new construction, to district and industrial heating and plumbing, to linked utility supply between detached buildings, to an increasing range of new renewable energy applications.

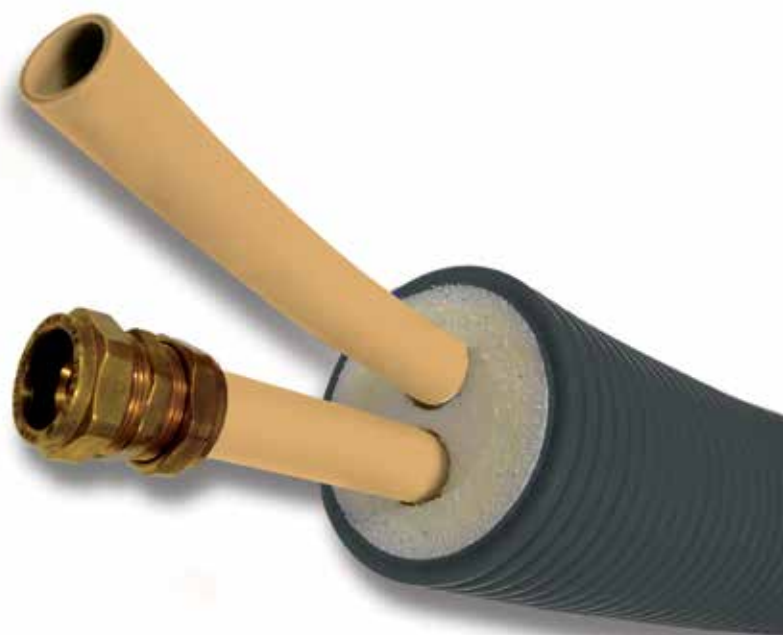
Available in customised lengths of up to 100 metres, this pipes flexible, low weight construction means it can be installed quickly and easily over obstacles. It's thermally insulated with a doubleskinned outer jacket. It's maintenance free. It's the environmentally friendly solution.

Product description:

Two Pre-Insulated Qual-PEX Plus+ 'Easy-Lay' Eco Pipes encapsulated in 125mm of high performance insulation protected within a corrugated PE-HD twin wall outer casing for maximum properties using Ireland's leading plumbing and heating pipe.

Applications:

- Air/Water Heat Pumps
- Geothermal Heat Pumps.
- Wood Pellet Boilers.
- Biomass & Biogas Boilers.
- External Gas and Oil Boilers
- & many more



Benefits:

- Irish size pipe eliminates the need for expensive adaptors
- Use with standard compression fittings & Qual-PEX inserts
- Manufactured in IRELAND
- 50 year guarantee
- Light weight
- Absolutely corrosion-free
- Environmentally friendly
- Maintenance-free system
- Long working life
- Coils range up to 100 meters - Coils can be cut to order
- Wide range of applications as regards temperature and pressure
- No need for special tools for assembly
- Range of end caps & junction covers available
- Available in all leading Merchants

The insulation:

The insulation of Qual-PEX Plus+ 'Easy-Lay' Eco Duo consists of micro-cellular cross-linked polyethylene foam with a closed cellular structure, permitting low water vapour diffusion with good insulation resistance to extreme temperatures. Moreover, Qual-PEX Plus+ 'Easy-Lay' Eco Duo maintains these high insulation properties over time. This is due to the superior characteristics of the cross linked PE foam, compared to other insulation materials (e.g. PUR foam) which show a decline in their insulation capabilities over time. Its unique moving layers design allows maximum flexibility and very easy installation.



For more technical information, certs, specs and guidelines please visit the download section of our website. www.pipelife.ie



Qual-Pex Plus+ 'Easy-Lay' Eco consists of a single pipe insulated with a high quality CFC-free and HCFC-free, blue or red flexible closed cell polythene pipe insulation. It comes in Irish sizes of 1/2", 3/4" and 1" & Multilayer sizes of 16mm, 20mm, 26mm & 32mm of varying insulation thicknesses depending on the application.

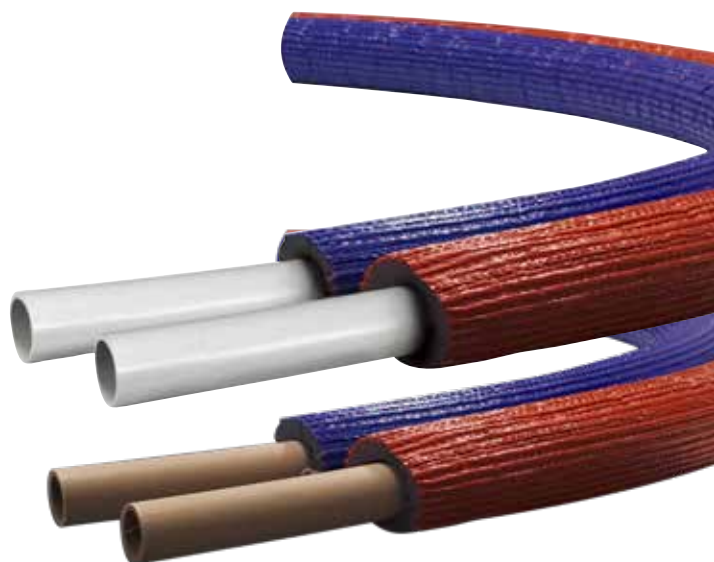
Qual-Pex Plus+ 'Easy-Lay' Eco

The Qual-Pex Plus+ Eco pipe uses Tubolit insulation of high quality and low thermal conductivity. It is highly effective in energy conservation and frost protection. It is non fibrous and creates no dust during installation or use. It has a durable PE film covering allowing maximum protection against water penetration and maximum bonding with concrete. It is also designed to give mechanical protection for in-wall cavity pipelines, which includes resistance to building materials and has pleasing coating for exposed areas.

These products deliver industrial leading thermal insulation properties using Ireland's leading plumbing and heating pipe.

Product description:

It is insulated with a high quality CFC-free and HCFC-free, blue flexible closed cell polyethylene pipe insulation. It has been designed to save time, money and energy costs and will improve the energy rating (BER) of any building.



Benefits:

- A pre-insulated Qual-PEX Pipe to save time, money and energy costs for Domestic, Commercial and Industrial applications.
- Available in imperial sizes of 1/2", 3/4" & 1" in 50m Coils which are approved for use with Qual-Crimp, Tectite and compression fittings
- Also available in multilayer sizes of 16mm, 20mm, 26mm & 32mm & are approved for use with suitably approved Press-Fittings.
- Manufactured in Ireland.
- 50 Year guarantee.
- Available through all leading merchants.
- Use Irish size pipe with Qual-PEX inserts only.

The insulation:

Tubolit is a high quality insulation with a low thermal conductivity. It is highly efficient in energy conservation and frost protection. It is non fibrous and creates no dust during installation or use. It has a durable PE- film covering allowing maximum protection against water penetration and maximum bonding with concrete. It is also designed to give mechanical protection for in-wall cavity pipelines, which includes resistance to building materials and has a pleasing coating for exposed areas.



Why choose Underfloor Heating?

Underfloor Heating is one of the most critical items that you will put into your home. Underfloor heating is a very clean and simple form of heating, ideally suited to today's well-insulated, low-energy and airtight buildings.

Most of the system will be buried in your floor foundations for your homes lifetime. It is critical that the components used are top quality and fully backed by reputable manufacturers. Pipelife offer a 50 year guarantee on our Qual-Pex Plus+ 'Easy-Lay' Multilayer Pipe.

Underfloor heating has the effect of heating the entire floor throughout leaving it warm to the touch resulting in even heat distribution. It is a proven fact that gentle heat radiated at floor level provides the optimum heating temperature profile for the human body.

Pipelife underfloor heating systems operate by pumping hot water through a number of Qual-Pex Plus+ 'Easy-Lay' Multilayer pipes embedded in the floor structure. These pipes run back to a centralised manifold. The manifold is supplied with hot water from your heat source – in this case an Air to Water Heat Pump, through a series of pipes. The hot water flowing through each loop will be controlled by individual thermostats positioned in each room.

When a room requires heat, hot water will flow through the loops in that room thus heating the floor and the room above. Once the thermostat is satisfied, the water will stop flowing to the circuit in that room.

The major benefits of underfloor heating systems is that it provides a comfortable even temperature throughout the building offering a healthier environment with less dust being circulated, high fuel efficiencies and no restrictions on interior design layout.

Each room thermostat can be set at 2°C lower than a room heated by radiators. This is because underfloor heating delivers 70% radiant heat and 30% convection heat as opposed to radiators, which emit 30% radiant heat and 70% convection heat. This means that an underfloor heating system is a more efficient way of heating your home.



The next step...

To get an underfloor quotation could not be easier, just follow these easy steps to complete satisfaction!

Step 1:



For a free quotation, simply, send a floor plan of your proposed dwelling with as much detail as possible to your local Qual-Pex stockist or directly to our underfloor heating department in Pipelife.

Step 2:



One of our engineers then carries out a number of calculations specific to this job and will return a detailed quotation to you within 48 hours.

Step 3:



Place an order via your plumbing contractor or Builders providers.

Step 4:



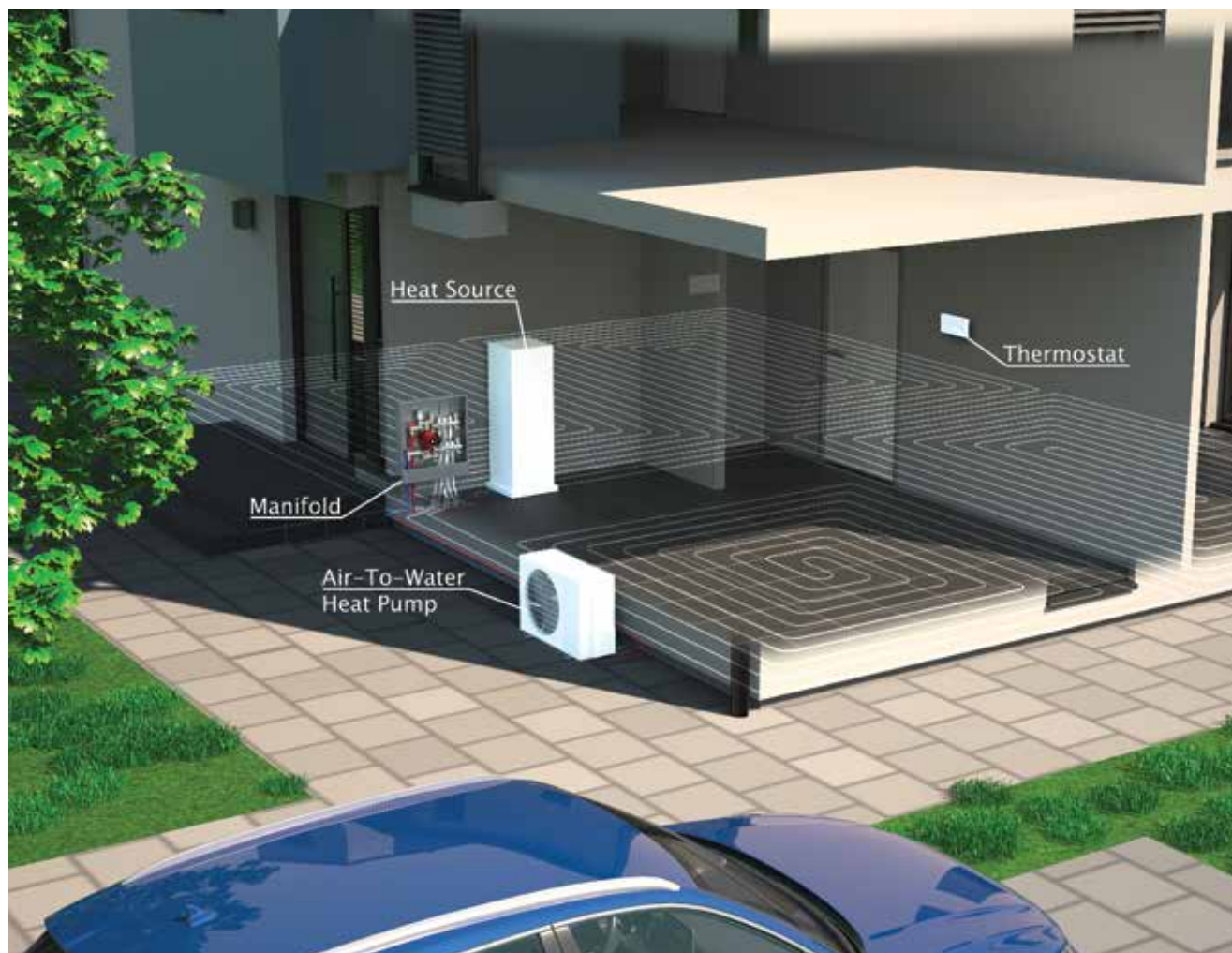
A full design specification, both mechanical and electrical is then produced detailing the design criteria and guidelines from the initial process of installing of the pipe to the commissioning of the system and controls layout. The design is always project specific and each design is tailored to suit the client's requirements.

Leading Field Service Team:

Our in-house field service team means that customers can rest assured that one-on-one support is available right across the country. The service team of highly qualified field-based engineers will bolster existing in-house support services with technical field support across Ireland. Our fully trained engineers will provide full technical back-up as well as being on hand to oversee installations and provide on-site training for installers.

LOOKING FOR MORE INFORMATION?

Why not drop us a line at
ireland@pipelife.com,
visit our website www.pipelife.ie
or just pick up the phone and call us
00353 -21-4884700



Why Choose an Air to Water Heat Pump?

It is clear that our planet is changing and changes need to be made to the way in which we heat our homes. With the support of Government schemes and homeowners wanting a better solution to high fossil fuel prices, there is a clearly a need for something different. Something Renewable.

In response new and innovative ways of heating homes have been developed. These systems involve new and more efficient ways of heating and delivering hot water to your home compared to traditional oil or gas boilers. Our range of Air to Water Heat Pumps can provide that solution.

How does an Air to Water Heat Pump Work?

An Air Source heat pump utilises energy in the outside air and transforms it into usable heat. This is performed through a refrigeration process and a vapour compression cycle, which sounds very complicated, but it's basically how a fridge works, but in reverse. Heat pumps work much more efficiently at a lower temperature than a standard boiler system would.

An air source heat pump extracts heat from the outside air in the same way that a fridge extracts heat from its inside. It can get heat from the air even when the temperature is as low as -15°C .

This makes them more suitable for underfloor heating systems or larger radiators, which give out heat at lower temperatures over longer periods of time.

Underfloor Heating systems go hand in hand with heat pump installations.

An underfloor system heating circulates low temperature water. Most conventional heating systems circulate warm water, usually between 50°C to 80°C whereas an underfloor heating system circulates water between 25°C to 40°C . A heat pump is most efficient when heating water at lower temperatures, the heat pump efficiency goes up bringing your running cost down.

Split Tank Unit Yutaki-S Combi

Yutaki S is a split system which produces hot or cold water to supply radiators, fan coil units, underfloor heating or a combination of these. When connected to a tank, it can also be used to produce domestic hot water.

The YUTAKI S heat pump consists of an exterior inverter unit connected to an interior hydraulic unit. In heating mode, the exterior unit absorbs heat from outside, even at very low temperatures (-20°C), transferring it to the water cycle by means of an interior hydraulic unit.

It can produce a water temperature of 60°C at outside temperatures of up to -5°C. In cooling mode during summer, it operates the opposite way: heat is drawn outwards, towards the exterior.

- Split air-to-water heat pump comprising indoor and separate outdoor unit
- Domestic hot water and multiple heating/cooling settings – ideal boiler replacement technology
- Energy efficient
- Range includes 20kW and 24kW models for ultimate flexibility
- Suitable for heating swimming pools
- Available with electric auxiliary heating as standard
- Screed drying function ideal for new builds
- Easy-to-use wireless controller with one-touch holiday button and frost protection as standard.
- Weather Compensation Control
- Generate hot water up to 60°C
- DHW Legionella Protection Program
- ErP energy efficiency class of up to A+++

Mono-Bloc Unit Yutaki-M

A compact solution where a single unit is installed on the outside of the property, taking up no space inside and can be used alongside an existing heating solution. The heat pump is connected to the indoor heating system simply by laying two heat insulated pipes and the electric connection cables under the ground.

The Yutaki-M Monobloc air-to-water heat pump systems are available in single phase capacities of 7.5kW - 16 kW, or three phase capacities of 7.5 kW to 16 kW.

The Yutaki M can provide domestic hot water and heating and is therefore ideal boiler replacement technology in a suitably insulated home or it can be used alongside an existing heating solution.

It is a compact solution where a single unit is installed on the outside of the property, taking up no space inside



For more technical information, certs, specs and guidelines please visit the download section of our website. www.pipelife.ie

- Monobloc air-to-water heat pump system
- Domestic hot water as well as heating – ideal boiler replacement technology
- Energy efficient
- Screed drying function ideal for new builds
- Easy-to-use wireless controller with one-touch holiday button and frost protection as standard.
- Weather Compensation Control
- Generate hot water up to 60°C
- DHW Legionella Protection Program
- ErP energy efficiency class of up to A+++

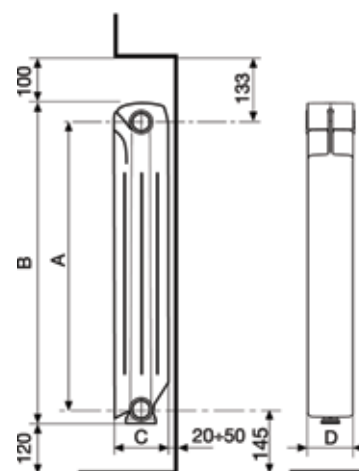
LOW TEMPERATURE RADIATORS

MASTER B3

- 100% MADE IN ITALY
- The rounded profile on the top, with two openings, gives a modern and captivating style to the radiator and maximizes the heat exchange;
- Ideal for low-temperature heating systems;
- Excellent weight/power ratio, which facilitates transport, handling and installation;
- Unalterable over time thanks to its double coating: anaphoresis and powder coating;
- High technological content: 3 international patents
- Openings at the rear of the radiator to increase convective heat exchange;
- Modular: perfect for any space;
- Maximum working pressure: 16 bar;
- Pressure test (undergone by 100% of manufactured products): 24 bar;
- Bursting pressure: 60 bar;
- Low water content, greater heat exchange, low thermal inertia = outstanding performances, low power consumption;
- 10-years warranty.

STANDARD SUPPLY: Available from 3 to 10 sections for centre distance 800 – from 3 to 12 sections for centre distance 700 - from 3 to 14 sections for centre distance 350-500-600.

COLOUR: Ral 9010 White



Technical information

	MODEL	CODE	DEPTH	HEIGHT	CENTRE DISTANCE	LENGTH	CONNECTION DIAMETERS	WATER CAPACITY	HEAT OUTPUT ΔT 50 K	HEAT OUTPUT ΔT 30 K	ESPON. n	COEFF. Km
			(C)mm	(B)mm	(A)mm	(D)mm	inches	litres/sect.	W/el.	W/el.		
B4	350/100	V686014	97	407	350	80	G1	0,20	89,9	47,2	1,2598	0,6506
B3	500/100	V662034	97	557	500	80	G1	0,24	114,9	59,9	1,2768	0,7783
B3	600/100	V662044	97	657	600	80	G1	0,27	132,2	68,9	1,2763	0,8973
B3	700/100	V662054	97	757	700	80	G1	0,39	149,5	77,7	1,2819	0,9928
B3	800/100	V662064	97	857	800	80	G1	0,42	165,0	85,1	1,2962	1,0360

Maximum working pressure: 1600 kPa (16 bar)

Characteristic equation of the model $\Phi = K_m \Delta T_n$.

The thermal efficiency values shown comply with the European Standard EN 442-1:2014 and are certified by the MRT Lab of the Milan

Polytechnic, notified body no. 1695.

So, what does this mean for you?

The choices available to you to heat your home and provide you with hot water remain wide. Deciding on the right choice depends very much on your property type, your priorities and your personal preferences.

If you are building your own new property the following is the heating solution that Pipelife would advise:

An air-to-water heat pump with Underfloor heating throughout the building with the option of low temperature radiators upstairs.

From our experience this arrangement gives the optimum result in terms of up-front costs, installation ease, running cost optimisation, maintenance and maximum control and comfort in your home. Chat to our team of specialist engineers today and find out how we can help make your project a success.

What we can offer You -

- Bespoke systems
- Integrated systems
- Stand alone systems
- Technical Know How
- 50 Years Manufacturing Experience
- Backup Service
- Irish Company – Proud member of Guaranteed Irish
- Unrivalled expertise
- Commitment to YOU
- Peace of mind
- Latest Technology used
- Professional Design Indemnity Insurance
- In-House specialist design software

Pipelife Eco - Our Reputation, Your Peace of Mind

Pipelife Eco – with you every step of your journey!

We can help you to comply with Part L of current building regulations.

We can help you comply with the current building regulations. All new build dwellings must comply with Part L as well as the other sections of the Irish Building Regulations. The Part L document sets out maximum energy usage and carbon emission levels for the dwellings. It also states that all new buildings must incorporate some form of renewable energy technology to help reduce the use of fossil fuels to heat the dwelling or to reduce the primary electricity usage. The most popular renewable energy sources used are solar panels for hot water, solar PV for electricity generation and heat pumps for heating and hot water. Our team at Pipelife can give excellent guidance and advice on how to achieve compliance with the current building regulations in the most cost effective manner. Why not email us your drawings and we can provide you with a free advice and a free no obligation quotation?

BER certificate

BER stands for Building Energy Rating and a BER certificate is a label that tells you about the energy efficiency of a building. BERs are a standardised way of rating and comparing the energy performance of different buildings so they allow prospective home buyers or tenants to judge the likely running costs of a property and easily compare one property to another. A BER certificate is only issued after a building has been surveyed by a qualified BER assessor, the building is then rated on an energy efficiency scale ranging from A, the most efficient, to G, the least efficient.



Smart System Control

What level of control do you require? Explore our various levels of energy efficient thermostat technology.



The Range

Our comprehensive range of thermostats offer a wide variety of solutions and are ideal for new builds and retro fit projects. We can offer a standard room thermostat all the way up to latest smart technology controls, the possibilities are endless and the result is always an energy saving efficient system. All our thermostat range are programmable and available in hard wired (230v or 12v), wireless and Smart versions.

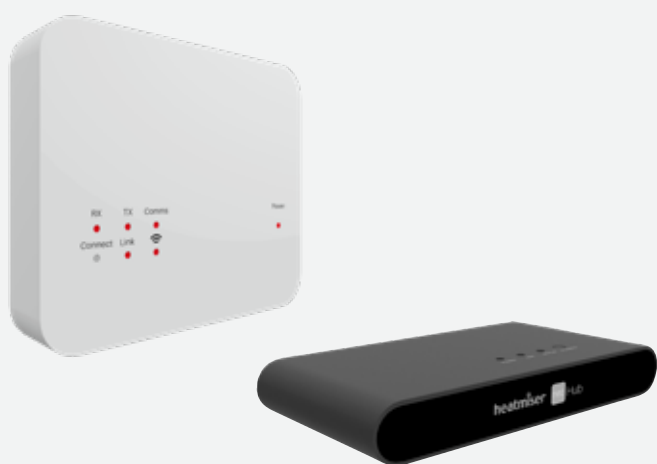


Slimline Range

The Slimline range is our most popular and available in 230v models for a standard system or a 12v Network model for those looking to control their system centrally or remotely. All require a cable to operate.

Neo Range

This range is available in 230v models for a standard system or a 12v Network model and can be easily paired with a Neo Hub to access the full range of smart controls.



Wireless Range

Our wireless thermostats offer an effective alternative to the hard wired range and are the ideal choice for extensions or relocating a thermostat.

Smart Control

Our Smart Phone applications are FREE to download and are the easiest and most convenient way to control your heating system for your smart phone, iPad or Android device. Simply download the app, pair the room thermostats and remotely control your system.

Apps available from



For more technical information, certs, specs and guidelines please visit the download section of our website. www.pipelife.ie

Case Studies

In 1996, the original Underfloor Heating department was set-up incorporating all the best the Pipelife Group has to offer. We cover every aspect of Heating Systems and deliver fully designed, energy efficient systems to a range of Installers, Developers, Builders, Engineers & Architects. Here is a small sample of projects that we have supplied over the years.

Ballinglanna Housing Development, Cork.

A new housing development of 608 A-rated, low energy, low CO2 houses in Glanmire, Co. Cork with development and construction being carried out by the O' Flynn Group. The Ballinglanna development contains a mix of 2, 3 and 4 bedroom houses, with an emphasis on high quality design and finishes throughout. Pipelife Ireland will supply the full heating system consisting of an Air-To-Water Heat Pump and Underfloor Heating for this development.



Volvo, Jaguar & Land Rover Showrooms, Bishopstown, Cork.

What do the Johnson & Perrot Land Rover, Jaguar and Volvo car garages all have in common? They are all heated by Pipelife's Underfloor Heating System. Pipelife is delighted to be part of this fantastic development supplying the Underfloor Heating requirements for this new state of the art showroom. In all there was 2500m² of Underfloor Heating pipe laid across the showroom floors.



Carlow Co Co in conjunction with Rebuild Ireland, Co. Carlow.

Heating System designed and supplied by Pipelife for housing development of 20 houses with Underfloor Heating on Ground Floor and Low Temperature Radiators upstairs. Opened by Minister for Housing Eoin Murphy. Minister for Housing and Urban Development.



Crammers Court Nursing Home, Belgooly, Cork.

Pipelife Ireland were delighted to supply our underfloor heating solution and Hitachi Heat Pumps for the new Crammers Court Nursing Home in Belgooly, Co. Cork. This project required 12 manifolds and a cascade system of 6 x 16Kw Monobloc Air to Water Heat Pumps to meet the heating requirements of the new building.



Hampton Wood, Jamestown Road & St. Margaret's Road, Dublin.

A selection of Houses, Duplexes and Apartments all supplied with our Hitachi Air to Water Heat Pumps & Underfloor Heating.



TAKE A SEAT at Pipelife's new state-of-the-art TRAINING CENTRE



Pipelife Renewable Training Centre

Pipelife Ireland now offer extensive product training at our new Renewable Training Centre in White's Cross, Cork. The courses are FREE to attend and our are led by members of our Technical Team who have a wealth of practical knowledge and installation practices, and feature a unique tour of the Pipelife manufacturing facility where visitors are given the opportunity to see first-hand where our products are designed and produced.

The free courses are available to installers, service engineers, plumbers, merchants, architects, local authorities and BER Assessors. The one day training courses, running from 9.30am to 4pm, also include lunch and all course materials. By offering a valuable insight into each of our heating technologies, those who attend our courses are equipped with the best product knowledge and installation techniques, ensuring that our customers are fully satisfied.

Reasons to attend

- Stay up to date with all the latest product trends and develop your knowledge and skills
- Single day courses packed with useful insights and hands-on product training
- Heat Pumps, Underfloor Heating, Qual-Pex Eco Renewables

**For more information please call us on
+353 21 4884700 or E-mail: Ireland@pipelife.com**

"These are really exciting times for Pipelife, we have always had a strong focus on providing a great service to all our customers and with the launch of our new Renewable Training Centre this will allow us to support them with hands-on product training and installation techniques. Along with the additional sales staff that we are adding to our team for 2019 these are truly exciting times for Pipelife".

- Padjoe Barry,
National Sales Manager

26 PRODUCTION SITES ACROSS 18 COUNTRIES, AND GROWING



Pipelife Ireland Limited

White's Cross, Cork

Phone: +353 21 488-4700

Fax: +353 21 488-4701

Email: ireland@pipelife.com

www.pipelife.com